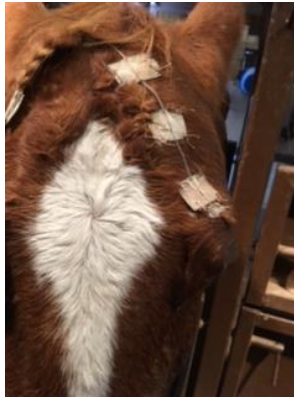


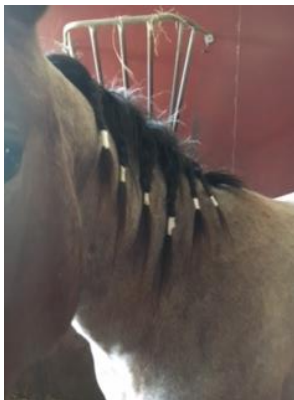
## Elastomeric Pump (#7100) Securement

For use as a CRI for corneal ulcer treatment

1. Apply a Sub Palpebral Lavage tube according to normal procedure.



2. Plait the mane from the poll to the base of the neck.



3. Using Elastikon, stretch a band around the base of the horse's neck. This will help keep the bulb from flopping around once it is attached.



4. Cut the narrow end off of a 6cc syringe case and use a lighter to melt the edges to make them smooth.



5. Thread the tubing of the elastomeric pump through the syringe case until the wide end of the bottle is nestled against the pump. This protects the tube as it enters the pump. Attach to the pump with white tape.

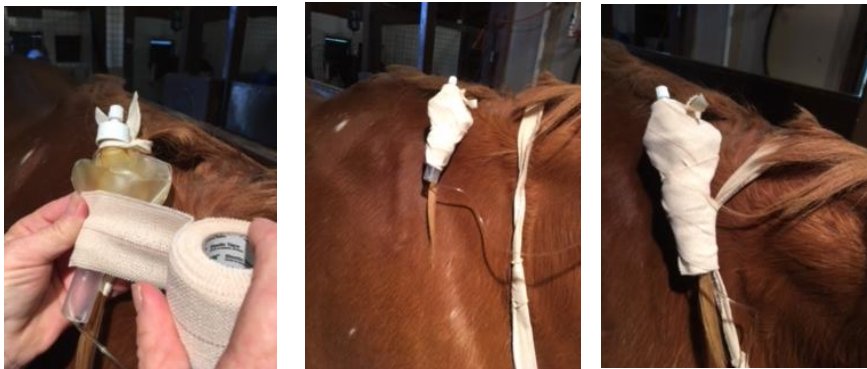


6. Using white tape, make a tie to wrap around the top of the pump and weave through the last braid.



Courtesy of Dr. Meghan Mendoza and Dr. Katie Hayes, Hayes Equine Veterinary Services

7. Attach the pump to the last braid on the horse using 2" Elastikon. Attach the braid/pump to the band of Elastikon around the neck at the same time.



8. Thread the pump tubing through the braids until it reaches your SPL.



9. Reinforce the rate adjustment tubing by taping it to a braid that is supported by a tongue depressor.



Courtesy of Dr. Meghan Mendoza and Dr. Katie Hayes, Hayes Equine Veterinary Services

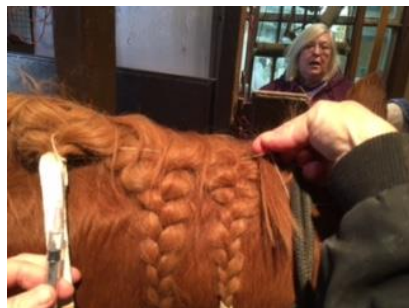
10. Fill the pump using a leur lock syringe. Smaller syringes work best to minimize the amount of force needed to fill the pump. The pump will be HEAVY, hence the need for taping to the braid AND a band around the neck.



11. Allow the tubing to fill from the pump. A drop of liquid should form at the end of the tube. Fill the SPL tubing with saline.



12. Kink the SPL tubing to keep the saline in the tube and attach the pump tubing. Reinforce attachment with white tape.



13. Cut the clamp off the pump tubing. It has a tendency to re-clamp when the horse moves. With the rate adjustment, the absence of the clamp will not be noticed when detached from the SPL.



14. Finished Product. If a halter must be left on the horse, the crownpiece MUST be under the SPL to prevent kinking or pressure on the tube.



15. Horse should wear slinky and fly mask at all times to protect the apparatus.

